

WORLD MILK DAY



TUESDAY JUNE 1, 2021

ENJOY DAIRY RALLY - MAY 29-31

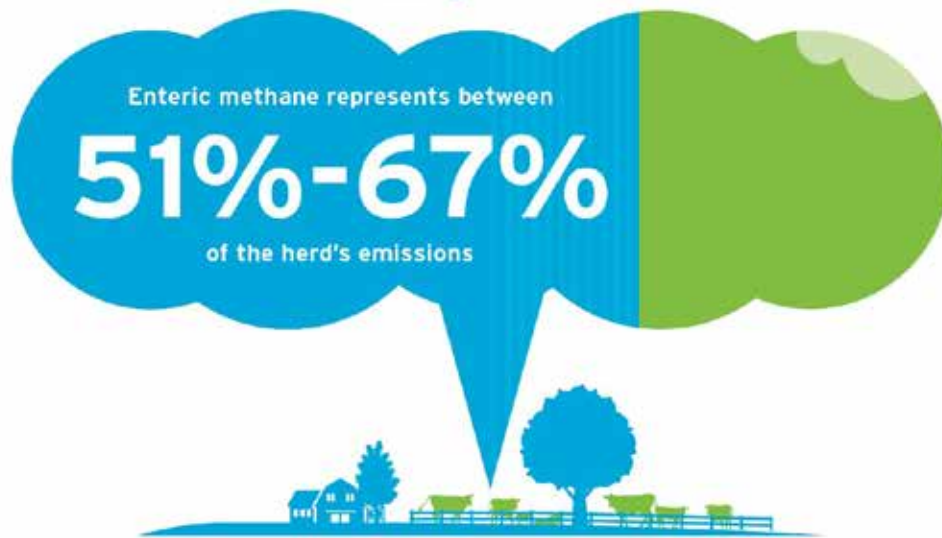
WORLD MILK DAY



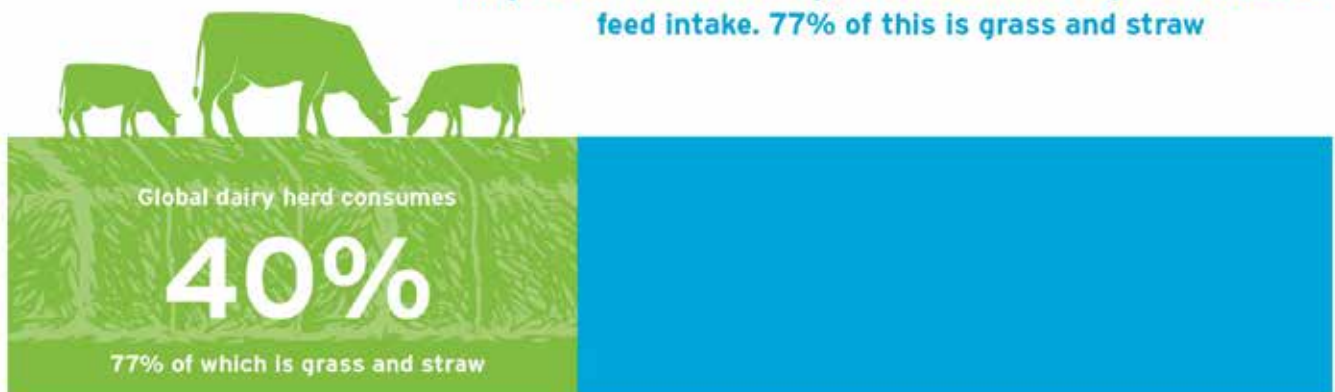
CENTRO DE LA INDUSTRIA
LÁCTEA DEL ECUADOR



Global % of dairy herd's emissions



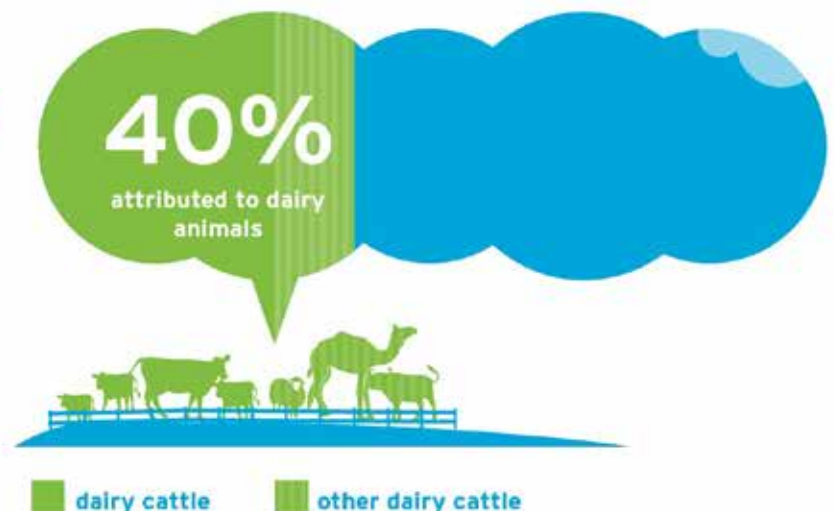
The global dairy herd consumes about 2.5 billion tons of dry matter feed annually, about 40% of the global livestock feed intake. 77% of this is grass and straw



Global % of livestock feed intake

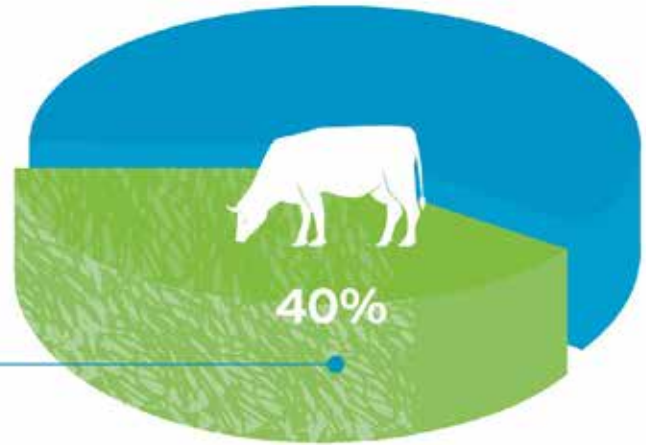
Global % of livestock emissions

Dairy animals (cows, buffalo, camels, sheep, goats) produce around 3.1 gigatonnes of CO2 equivalent per year or 40% of global livestock emissions, with dairy cattle accounting for 75% of it

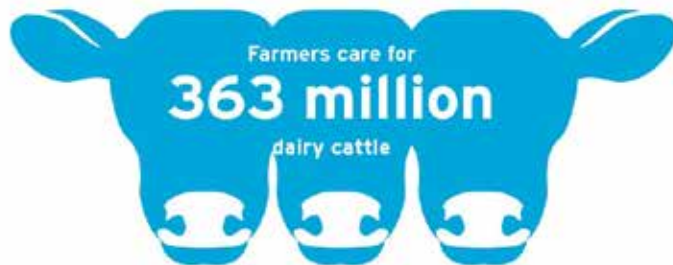


40% of global livestock feed intake is consumed by the global dairy herd

about 2.5 billion tons of dry matter feed annually



77% global dairy herd intake is grass and straw



Farmers in developing countries usually keeping them in herds of

2 or 3 cows



In industrialized economies herds are often larger: the average dairy farms in the UK and the US manage **90 and 300 dairy cows** respectively



However, farms with more than 100 cows represent less than

0.3%

of all dairy farms globally

Milk is one of most produced and valuable agricultural commodities worldwide

Milk ranks third by production tonnage

Milk is the top agricultural commodity in value terms the world over



Contributes **27%** to the global value added from livestock



Contributes **10%** to the global value added of agriculture

Milk and dairy products account for about



14% of global agricultural trade

133 million
Dairy Farms



600 million
people live on Dairy Farms



400 million

additional people are supported by the full time jobs that are created in support of dairy farming



240 million

people are directly or indirectly employed in the dairy sector



37 million

farms are female-headed with

80 million

women engaged in dairy farming to some extent



1 billion
people strong



6 billion
consumers impacted



of the worlds agriculture lands are cared for by the dairy sector

At the global level, milk contributes an average of



of energy



of protein



of fat